

Partridge Ave

Westview Dr N

Mulberry Ct

Walnut Ct

Oak St N

65

Elm St W

Elm St W

Elm St W

Elm St W

Chamber Acres

# 2025 NORTH IOWA NATIONALS

108	75
107	74
106	73
105	72
104	71
103	70
102	69
101	68
100	67
99	66
98	65
97	64
96	63
95	62
94	61
93	60
92	59
91	58
90	57
89	56
88	55
87	54
86	53
85	52
84	51
83	50
82	49
81	48
80	47
79	46
78	45
77	44
76	43

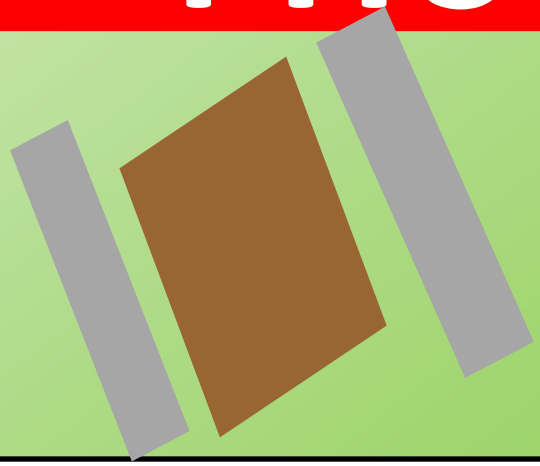


42
41
40
39
38
37
36
35
34
33
32
31
30
29
28
27
26
25
24
23
22
21
20
GATE
19
18
17
16
15
14
13
12
11
10
09
08
07

06
05
04
03
02
01

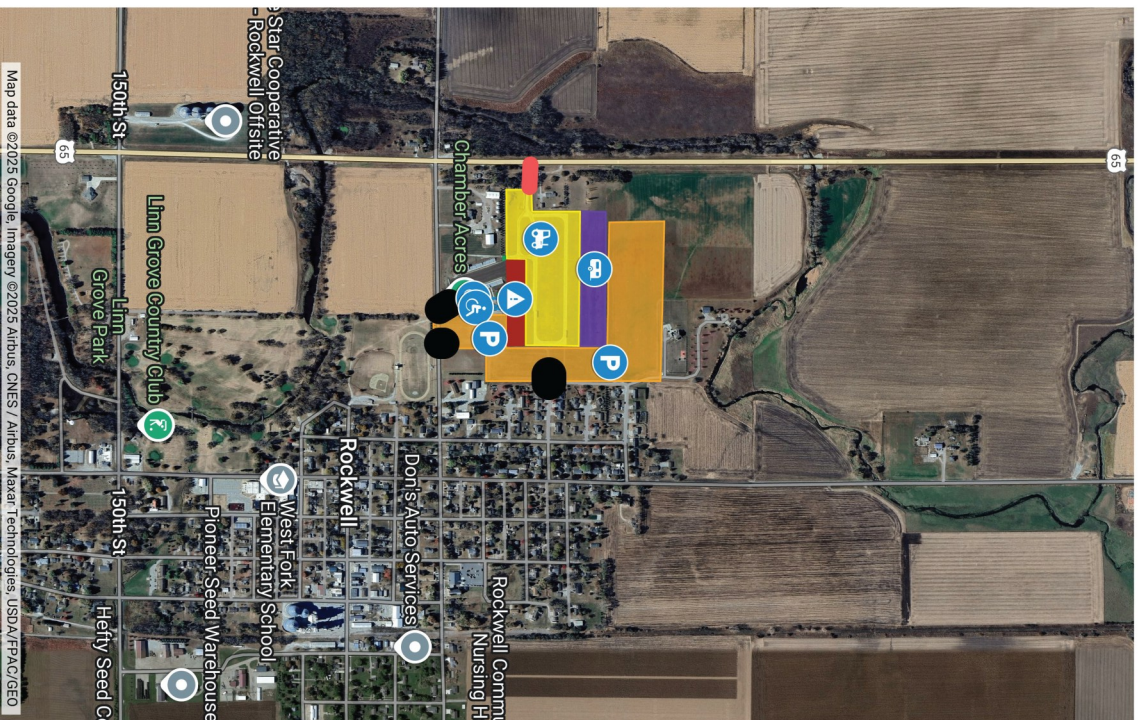


# PITS



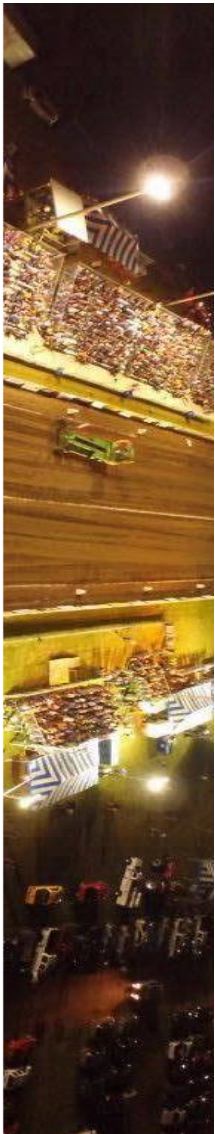
# 2025 NORTH IOWA NATIONALS

- Parking, Pits & Camping
  - Camping Area
  - General Parking
  - Ticket Gate/General Entrance
  - Handicap Parking 1
  - Handicap Parking 2
  - Pits
  - Hot Pits
  - Ticket Gate/Pit Entrance
  - General Parking
  - Puller Entrance
  - Handicap Parking
  - Handicap Parking
  - General Parking
  - Camping
  - Hot Pits
  - Puller Pits



Map data ©2025 Google, Imagery ©2025 Airbus, CNES / Airbus, Maxar Technologies, USDA/FPAD/GEO





## NORTH IOWA NATIONALS TRACTOR PULL CAMPING RULES & REGULATIONS

CAMPSTES ARE 30' X 50'

- One camper, trailer, tent, bus or any other camping unit per lot.
- Campers will not be allowed on the grounds until Wednesday July 30<sup>th</sup>, 2025 at 1pm.
- All camping units must have adequate fire extinguishers.
- All open fires must be contained in a fire ring. (Not provided). The fire chief can ban any fires at his discretion depending on weather conditions or other factors.
- Restrooms and Showers (with a fee) are available on the grounds. (check the map for location)
- There will be ice for sale by the shower trailer.
- For your convenience we have a fill & dump station on the grounds. (check the map for location)
- PLEASE be considerate of the people living in the homes along the campground areas. Please watch your behavior and your language as there are young children that live in these homes.
- **NO FIREWORKS ARE ALLOWED IN THE CAMPGROUND. IF YOU ARE FOUND WITH THESE, YOU WILL BE ESCORTED OUT IMMEDIATELY WITH NO REFUNDS.**
- Please be aware of carbon monoxide exhaust. Please make sure your generator or camper exhaust is not going directly into another unit.
- Dogs are allowed in the campgrounds. All dogs must be on a leash. If you bring a dog, PLEASE clean up after it or you will be asked to leave. **PLEASE NOTE: DOGS ARE NOT ALLOWED IN THE GRANDSTAND AREA.**
- Alcohol is allowed in the campground, however, you must be 21 to consume alcohol, it's the law, and you must keep it in the campground. Dispose of all containers in designated trash receptacles.
- Quiet time begins at 1:00am and goes through 6:00am. If you feel this time is too late, please remember that this is **NOT** a traditional campground; therefore, peace, quiet, and privacy are **NOT** likely in this setting.
- **There are no rain dates and no refunds.**